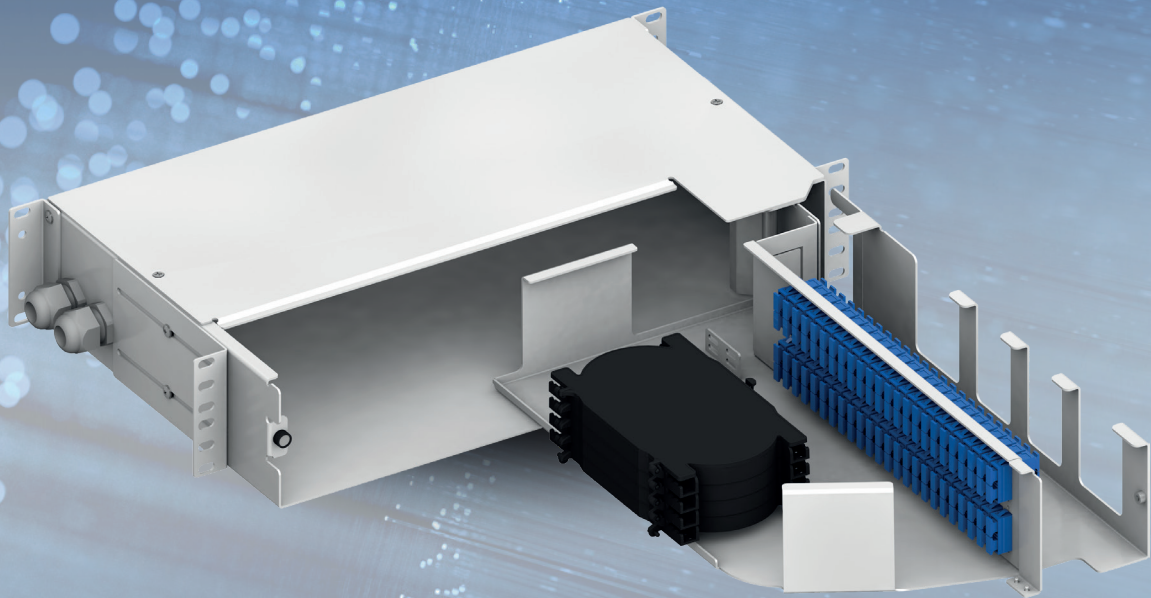


alfafonet[®]

Complete Connectivity Solutions




OFSB 2RU FIBER OPTIC PATCH / SPLICE PANELS

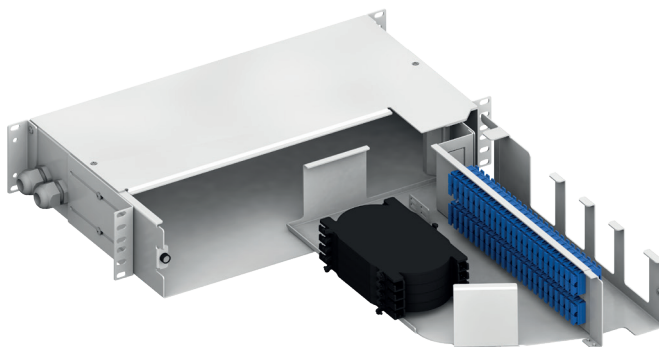
**FIBER OPTIC PATCH PANELS
OFSB**


OFBS PIVOTSYSYSTEM FIBER OPTIC PATCH/SPLICE PANEL


 Product Family
Pivotsystem


Standarts
 19" RU
 3 Rack Unit

Protection Rating
 IP 10



 H 88 mm
W 280 mm
D 430 mm

 Available Colors:
Light Grey (RAL7035)
Blue (RAL5024)

 Weight
Net ~60 kg
Gross ~64 kg

PRODUCT OVERVIEW

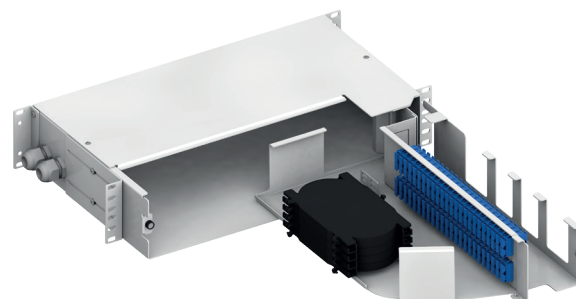
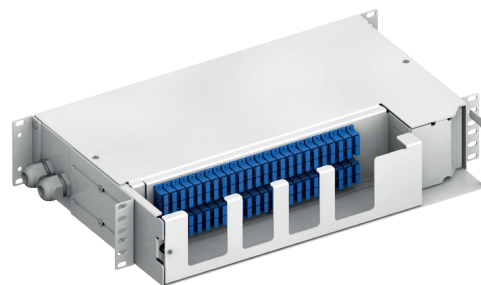
The OFSD Fiber Outdoor Cabinet is designed as a dedicated for outdoor fiber connection and distribution applications. Functional and simple desing gives advantages for subrack installation, cable assembly, cable fixing and management. Wide cable entry diameter range and a alot of entry points makes easily installation and prevent from cable clutter. Also The cabinet provides Rack Unit standart and Subrack assembly gap as 19". Body, Front Door and base supported with profiles for high mechanical strength and The cabinet protected with high-secure special lock.

Features

- › Fits comfortably into new and existing interconnect, cross-connect, customer premise, and co-location environments
- › Most common connector styles and types available
- › Compatible with industry standard equipment frames
- › Modular design
- › Swing-open front swing-out tray
- › Optional splice tray kit for on site conversion to patch and splice panel

Specifications

- › Aluminum Construction per ASTM B209
- › Durable textured powder coat finish available in black or white
- › Universal 19/21" EIA/TIA rack compatibility
- › Standard density: up to 72 fiber, High density: up to 144 fiber
- › Front and back side mounting options
- › Standard cable stub location is leftside
- › Optional cable stub location is rear



801008-W10-24

CNO Fibre Outdoor Cabinet, 19" 24U - with base, body and doors Colour: White- RAL9003 (12pcs. PG21 Plastic Gland, 4pcs. PG29 Plastic Gland, 8pcs. Plastic Spool, 1pcs.High Secure Lock for Front Door)

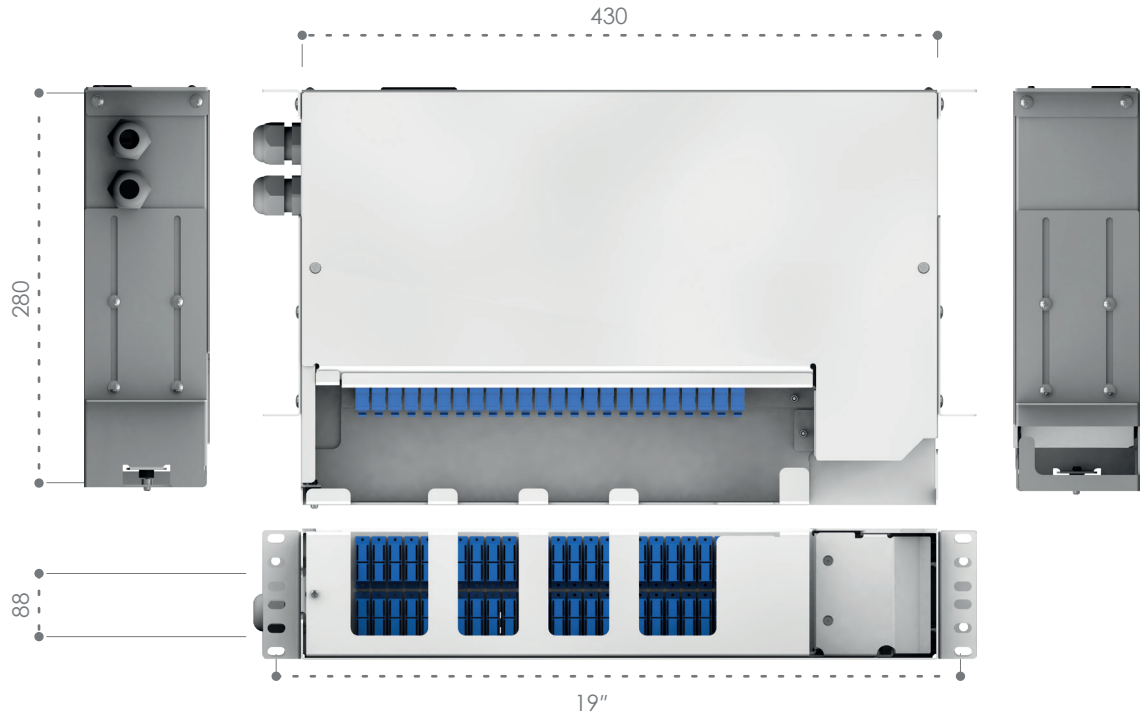
Scan QR Code
View Brochure*

Ordering Code

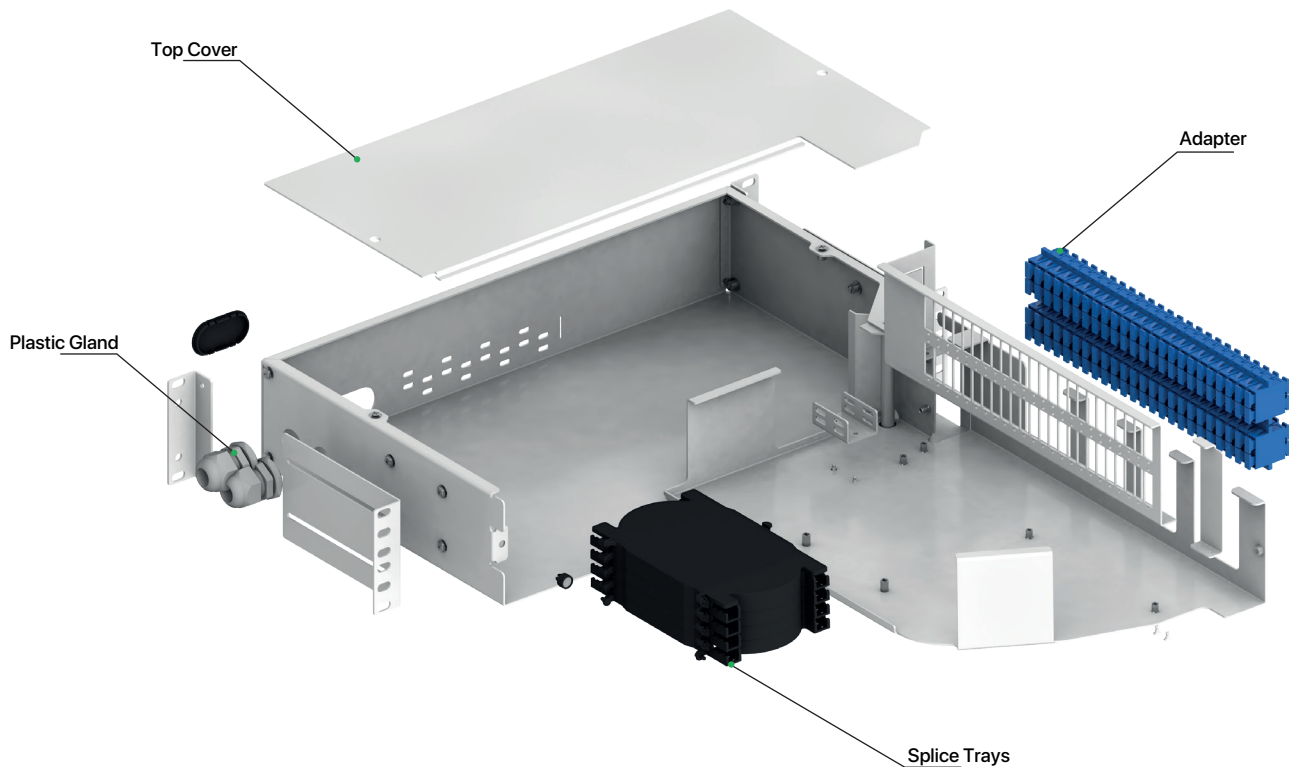
*Brochure contains key features, optional parts, packing details, standart accessories.

OFSB PIVOTSYSTEM FIBER OPTIC PATCH/SPLICE PANEL

Dimensions

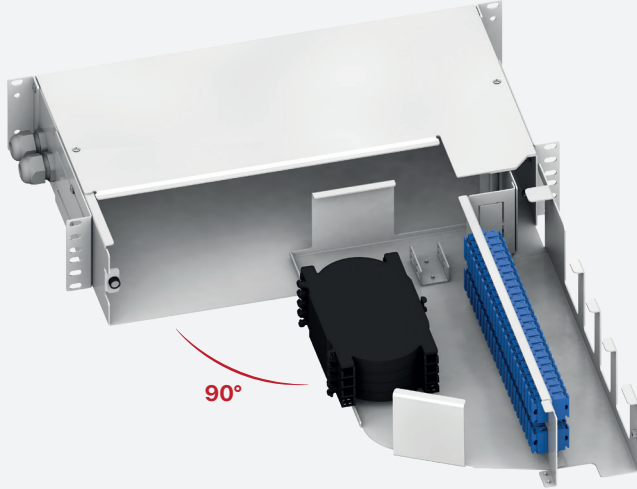


Exploded View

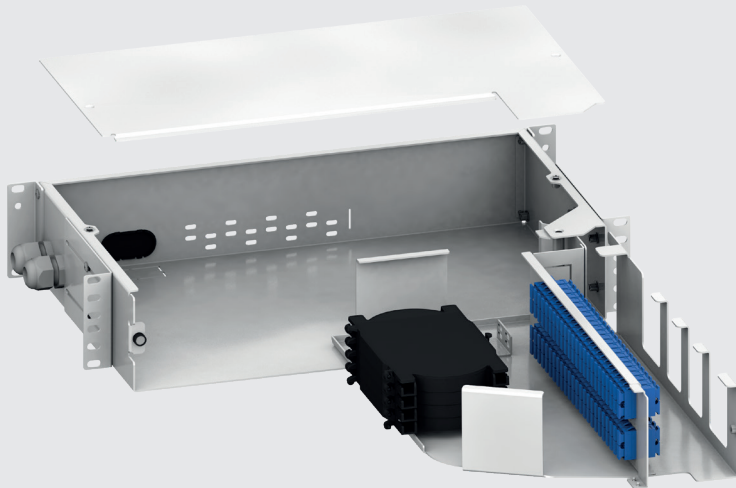


OFSB PIVOTSYSTEM FIBER OPTIC PATCH/SPLICE PANEL

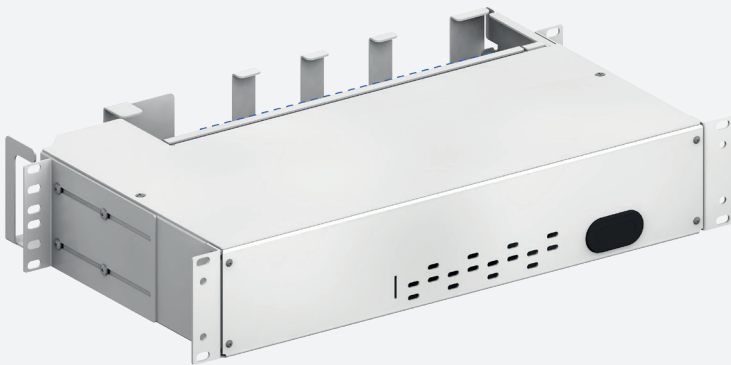
Key Features



✓ **Swing-open front swing-out tray**



✓ **Modular Design**



✓ **Cable fixing**

Main cable can be fixed with cable fixing holes

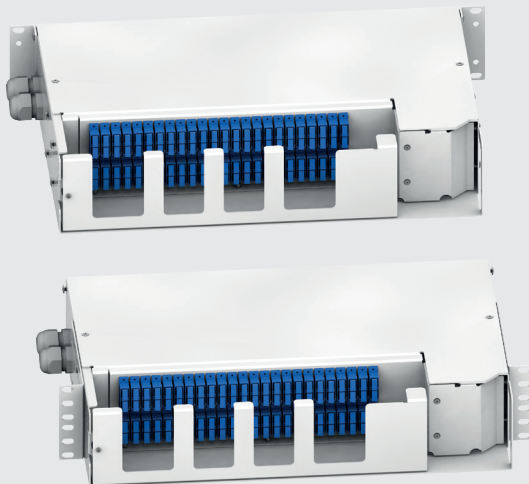


OFSB PIVOTSYSYSTEM FIBER OPTIC PATCH/SPLICE PANEL

Key Features



✓ **Front Cable Entry Hole**



✓ **Front and Back Mounting Option**



✓ **Secure Closing with Magnet**

